

# MALAWI'S MINING SECTOR

Recommendation to Ministry of Mines

Prepared by  
**Grain Malunga**

2/14/2023

# 1. INTRODUCTION

1.1 Malawi Vision 2063 states that “Mining has tremendous potential to develop and support the inclusive wealth creation agenda” (Page 17 under Industrialising Mining).

1.2 Deisired interventions:

- a. Development of high value mines through Public Private Partnerships (PPP) arrangements
- b. Promoting value addition for job creation
- c. Modernizing mining legal frameworks to be relevant with private sector growth
- d. Institutional transformation and restructuring

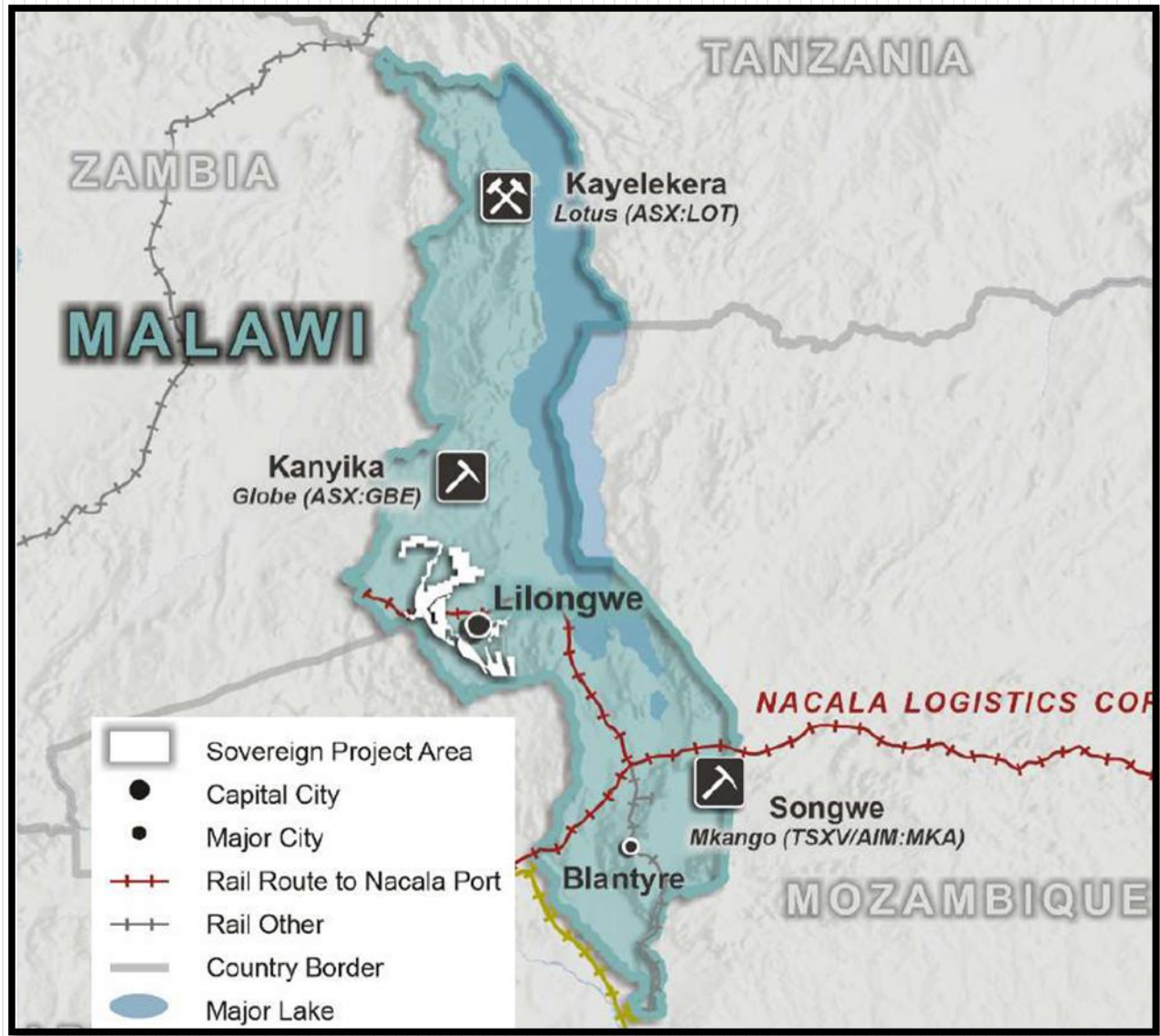
### 3. HIGH LEVEL POLITICAL WILL

- 3.1 Mining earmarked for an abler in funding Malawi 2063 vision.
- 3.2 Mining has linkages with agriculture productivity, industrialisation and infrastructure development.
- 3.3 RBM to buy gold and support cooperative establishment
- 3.4 National Mining Company to be established to hold government equity and provide technical expertise in contract negotiation
- 3.5 Mining Regulatory authority to be established and possess a state of the art Laboratory and inspectorate and professional staff who are idle at the moment.

## 4. ADVANCED MINING PROJECTS

4.1 Speed up mining contracts preferably within six months through cabinet and parliamentary approval

- Kayelekera Uranium,
- Kanyika Niobium,
- Songwe Rare Earths,
- Kasiya Graphite/Rutile,
- Tenagani and Makanjira Heavy Mineral Sands



# Kayelekera Uranium

Category	Million Tonnes	Grade (U <sub>3</sub> O <sub>8</sub> ppm)	U <sub>3</sub> O <sub>8</sub> (Million lbs)
Measured	0.9	830	1.6
Measured –(ROM Stockpile)	1.6	760	2.6
Indicated	29.3	510	33.2
Inferred	8.3	410	7.4
Total	40.1	510	44.8
Inferred – Low Grade Stockpiles	2.4	290	1.5
Total	42.5	500	46.3

**Sovereign Metals Kasiya Mineral Resource Inventory at 0.7% rutile cut-off grade**

Resource		Rutile		Graphite	
Category	Million	Rutile %	Rutile	Graphite	TGC
	Tonnes		Tonnes (millions)	(TGC)* %	Tonnes (%)
<b>Indicated</b>	662	1.05	6.9	1.43	9.5
<b>Inferred</b>	1,113	0.99	11.0	1.26	1.61
<b>Total</b>	1,775	1.01	18.0	1.32	23.4

## Songwe Rare Earths

Category	Million Tonnes	TREO %	TREO tonnes (thousand)
Measured	8.81	1.50	131.9
Indicated	12.22	1.35	165.5
Inferred	27.54	1.33	366.2
<b>Total (M &amp; I)</b>	21.03	1.41	297.4

## Globe Metals Mineral Resource Inventory at 1,500 ppm Nb<sub>2</sub>O<sub>5</sub> cut-off grade

Category	Million Tonnes	Nb <sub>2</sub> O <sub>5</sub> ppm	Ta <sub>2</sub> O <sub>5</sub> ppm
Measured	5.3	3,790	180
Indicated	47.0	2,860	135
Inferred	16.0	2,430	120
<b>Total</b>	68.3	2,830	135

# ADVANCED EXPLORATION PROJECTS

1. GEMMAP PROJECT
2. Kangankunde Rare Earths Project